

Page 1 - The Space and Front of House

Page 2 - Video and Electrics

Page 3 - Electrics (contd.)

Page 4 - Sound

LARGE SPACE

MITU580

TOTAL DIMENSIONS

67'x24' of flexible open space
47'x24' of playing space with risers installed

DOUBLE DOOR ENTRANCE/EXIT TO LOBBY

4'8" wide x 6'8" high

TRUSS GRID

12" box truss; Floor to bottom of truss: 14'-15'
Ceiling height is approx. 16'

SPACE FUNCTIONS

Air Conditioning and Heating available in the space
3 windows and 2 skylights that may be open/closed

FLOOR/WALLS

The floor is smooth and clean concrete
The walls are a mix of cement blocks and drywall
All the walls and the floor are charcoal in color

SOFT GOODS

MITU580 does not have a soft goods inventory

RISERS AND SEATING

(64) Black, padded, armless folding chairs

A system of flexible riser platforms is available.

Typically, these are installed as pictured above but can be rearranged or struck as needed

PROPERTIES

(12) Music Stands

DRESSING ROOM

The dressing room is located inside the main space underneath the booth structure.

- (1) unisex dressing room
 - suitable for a maximum of 8 performers
 - vanity lighting
 - mirrors, tables
 - chairs
 - costume rack

No showers or laundry facilities.

Performers & crew use single restroom (same as the audience).

FRONT OF HOUSE

MITU580

LOBBY AND BOX OFFICE

Theater Mitu's offices are located atop an industrial loft in the front of house area and must remain accessible to Mitu staff. Mitu staff will also require continuous access to the booth, equipment room, and unisex restroom in the lobby.

LOAD-IN AREA

Main Entrance is a standard 80"x 32" steel door.
Entrance to large rear space is a set of double doors measuring 4'8" wide x 6'8" high

ELECTRICS CONTD.

MITU580

INTELLIGENT FIXTURES

- (2) Rosco DMX IRIS w/
built-in power supply

- (2) Rosco ICUE MOVING MIRROR
w/ 1 Rosco PSU51

LIGHTING CABLES

Below is the in-house cable inventory. Much of this is in use when the rep plot is hung and circuited. Additional cable is usually available but MITU580 cannot guarantee anything beyond what is listed here.

PowerCon Cables

- (10) 5' Powercon cable
- (13) 10' Powercon cable
- (7) 15' Powercon cable
- (8) 25' Powercon cable
- (3) 50' Powercon cable

Edison extension cables

- (1) 10' Edison cable
- (3) 15' Edison cable
- (6) 25' Edison cable
- (3) 50' Edison cable

3 pin DMX cable

- (2) 10' DMX cable, 3-pin
- (10) 25' DMX cable, 3-pin

4 pin DMX/XLR cable

- (2) 5' DMX cable, 4-pin
- (2) 15' DMX cable, 4-pin

5 pin DMX cable*

- (7) 5' DMX cable, 5-pin
- (8) 10' DMX cable, 5-pin
- (11) 15' DMX cable, 5-pin
- (8) 25' DMX cable, 5-pin
- (1) 50' DMX cable, 5-pin

*NOTE: Cable inventory varies slightly depending on activity in the space. The 5pin DMX and Powercon cables listed above are the minimum that will be available during the rental period. MITU580 cannot guarantee additional or spare cable in the inventory but it is often available.

CONTROL

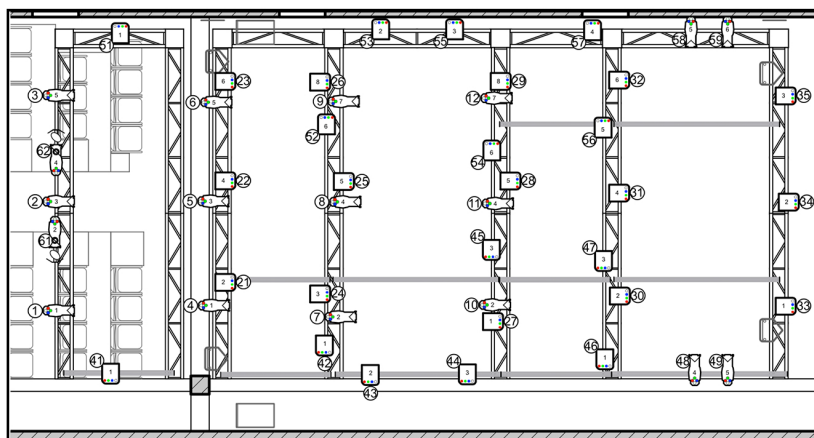
- (1) DMX Opto Splitter
(ENTEC RDS8, 1IN/8OUT, 5-pin)
- (4) Chauvet 4-Channel Edison Dimmers
(3-pin DMX)

PIPE & IRON ACCESSORIES

- (5) 18" Sidearm, w/ 1 Tee
- (5) 24" Sidearm, w/ 1 Tee

LADDERS

- (2) 12' A-Frame Ladders



Plans and sections are available in Vectorworks and PDF.

MITU580's technical specifications, seating charts, photos, stage drawings and more are available upon request. Please email MITU580's space manager at rentals@theatermitu.org with questions or to request materials.

ELECTRICS CONTD.

MITU580

LIGHTING FIXTURES

- (20) ETC ColorSource 4 Deep blue
(5-pin DMX)
- (6) ETC EDLT 70deg lens for Source 4
- (18) ETC EDLT 50deg lens for Source 4
- (3) ETC EDLT 26deg lens for Source 4
- (2) ETC EDLT 26deg lens for Source 4

- (30) Martin Rush Par 2 RGBW Zoom
(5-pin DMX)

- (4) Chauvet Slim Par Pro (3-pin DMX)

- (4) Phillips Showline SL Nitro 510 Strobes
(5-pin DMX)

- (1) Colorkey KasBar COB Tri 5 75W
RGB LED Wash Bar (3-pin DMX)

- (7) Birdies (MR-16 Lamps)

INTELLIGENT FIXTURES

- (2) Rosco DMX IRIS w/
built-in power supply

- (2) Rosco ICUE MOVING MIRROR
w/ 1 Rosco PSU51

LIGHTING CABLES

Below is the in-house cable inventory. Much of this is in use when the rep plot is hung and circuited. Additional cable is usually available but MITU580 cannot guarantee anything beyond what is listed here.

PowerCon Cables

- (10) 5' Powercon cable
- (13) 10' Powercon cable
- (7) 15' Powercon cable
- (8) 25' Powercon cable
- (3) 50' Powercon cable

Edison extension cables

- (1) 10' Edison cable
- (3) 15' Edison cable
- (6) 25' Edison cable
- (3) 50' Edison cable

3 pin DMX cable

- (2) 10' DMX cable, 3-pin
- (10) 25' DMX cable, 3-pin

4 pin DMX/XLR cable

- (2) 5' DMX cable, 4-pin
- (2) 15' DMX cable, 4-pin

5 pin DMX cable*

- (7) 5' DMX cable, 5-pin
- (8) 10' DMX cable, 5-pin
- (11) 15' DMX cable, 5-pin
- (8) 25' DMX cable, 5-pin
- (1) 50' DMX cable, 5-pin

*NOTE: Cable inventory varies slightly depending on activity in the space. The 5pin DMX and Powercon cables listed above are the minimum that will be available during the rental period. MITU580 cannot guarantee additional or spare cable in the inventory but it is often available.

CONTROL

- (1) DMX Opto Splitter
(ENTEC RDS8, 1IN/8OUT, 5-pin)
- (4) Chauvet 4-Channel Edison Dimmers
(3-pin DMX)

PIPE & IRON ACCESSORIES

- (5) 18" Sidearm, w/ 1 Tee
- (5) 24" Sidearm, w/ 1 Tee

LADDERS

- (2) 12' A-Frame Ladders

SOUND

MITU580

OVERVIEW

There are (2) mains, (4) fills and (2) subs available in the space. *(NOTE: The Rep sound plot includes 2 mains, 2 fills, and 2 subs)*

There is a digital snake (I/O rack) in the space connected to the console to allow for easier audio cable-runs.

All speakers can be moved but must be restored to the Rep Plot at the end of the rental.

There is also a Clear Com System available upon request.

MIXING EQUIPMENT

Digital Mixing Console located in the booth at the rear of the space. One 25" AUX cable remains connected to the console for basic playback.

The console cannot be moved without express permission

Yamaha TF-3 Console
Yamaha NY-64D Dante Card
Yamaha TIO-1608 I/O Rack for TF-3

SPEAKERS

- (2) QSC KW122 Mains Speakers
- (4) Yamaha DXR8 Speaker
- (2) QSC KS112 Subwoofer
- (2) Kustom PA50 personal PA system Speakers

SOUND CABLES*

XLR Cable

- (14) 10' XLR Cable
- (13) 25' XLR Cable
- (14) 50' XLR Cable
- (4) 75' XLR Cable
- (1) 100' XLR Cable

MICROPHONES

- (6) Shure SM58 microphones
- (6) Microphone stands with boom arms

PLAYBACK

Computer Playback on Mac Mini and up to 24 Channel playback via Dante

*Additional sound cables, equipment, and software may be available upon request or rented from MITU580 for an additional fee. (this includes but is not limited to TRS cable, AUX cable, various audio interfaces, and peripheral devices)