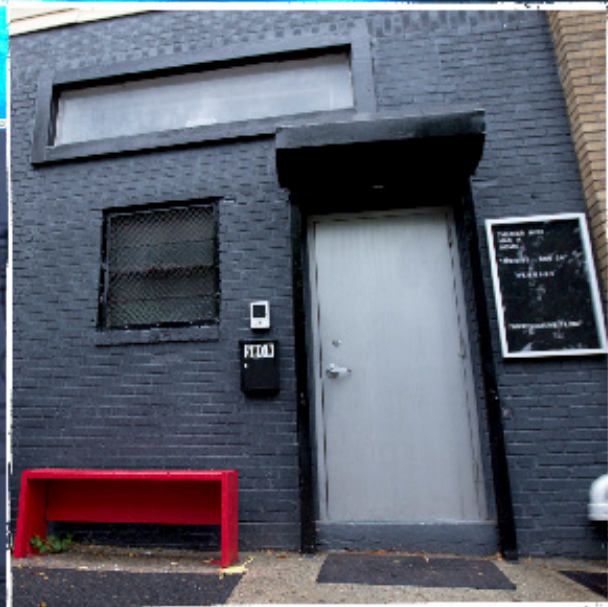
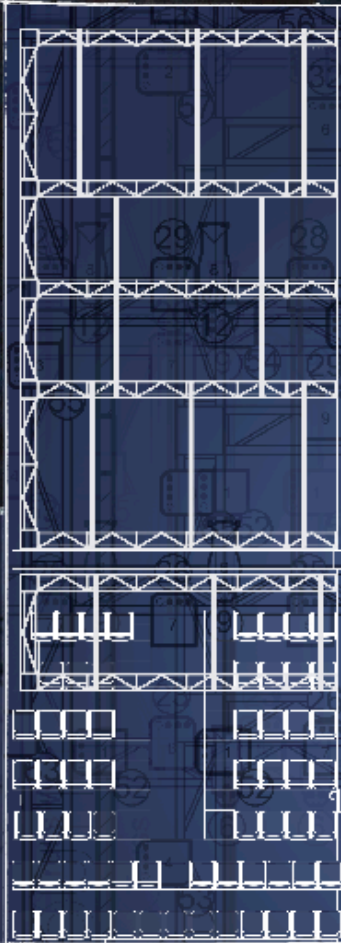
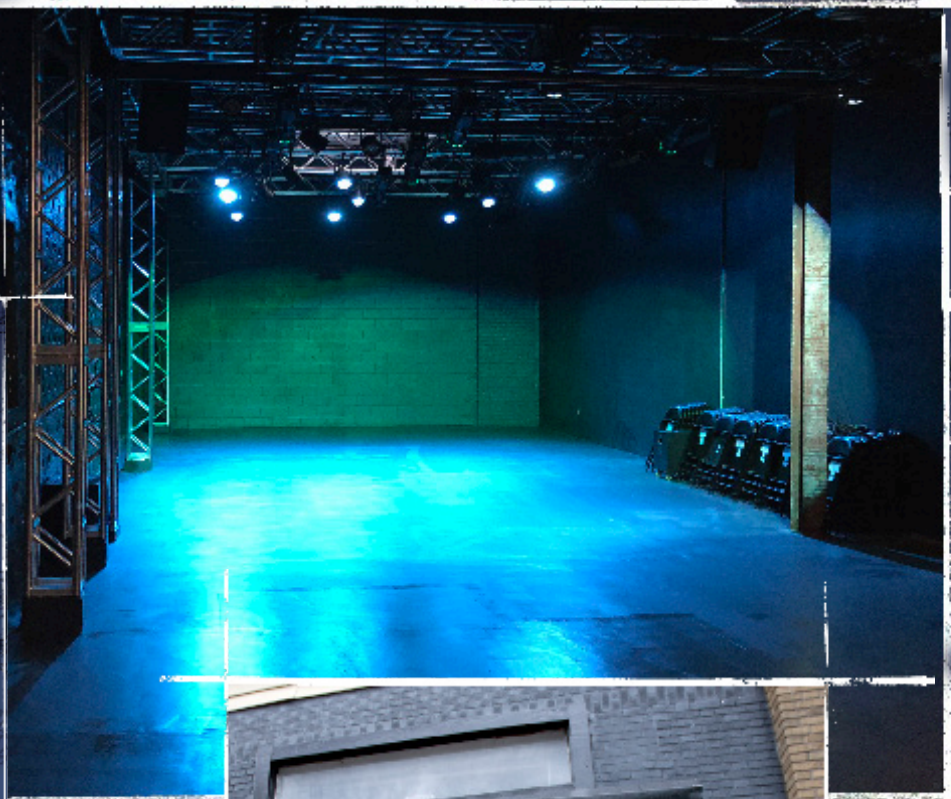


MITU580

A NEW INTERDISCIPLINARY ARTS SPACE IN GOWANUS, BROOKLYN

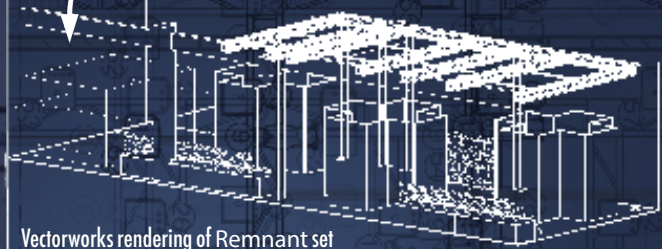


THE SPACE

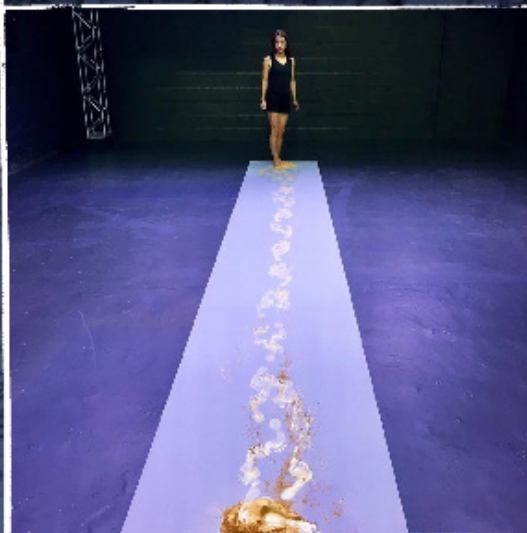
Located at 580 Sackett St. in the heart of Gowanus, a former glass recycling facility is now Theater Mitu's newly renovated home. MITU580 is 2,400 square feet of flexible, artist-run space for unique gatherings where interdisciplinary arts practice is interrogated, incubated, and produced. MITU580 intersects the fields of performance, installation art, new media, and design.



set for Theater Mitu's
Remnant/MITU580



Vectorworks rendering of Remnant set



THE SPECS

DIMENSIONS: modular performance space is 67'x24'

HEIGHT: 15' floor to grid

SEATING: raked modular risers seat 64 patrons

LOBBY: flexible front room is 26'x14'

- fully networked lighting & sound equipment
- 60 full-color LED lighting instruments
- 24-input, 48-channel digital audio mixer
- brand-new speaker system: mains, fills, and sub-woofers
- 3 projectors, 20 displays

For schematic, ground plan, technical documents, and full inventory, contact: rentals@theatermitu.org

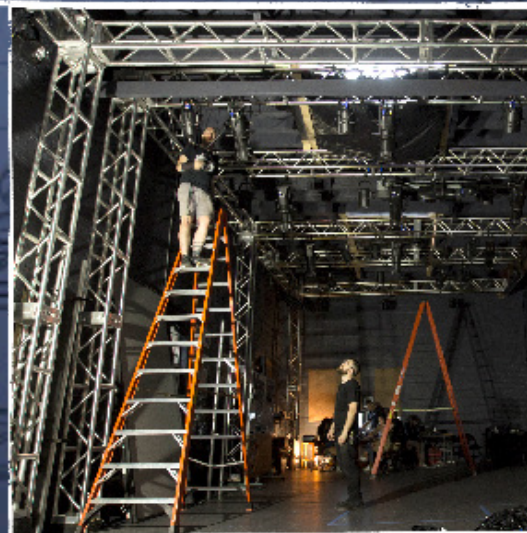
THE COMPANY

Founded in 1997, Theater Mitu is a permanent group of collaborators committed to expanding the definition of theater through methodical experimentation with its form.

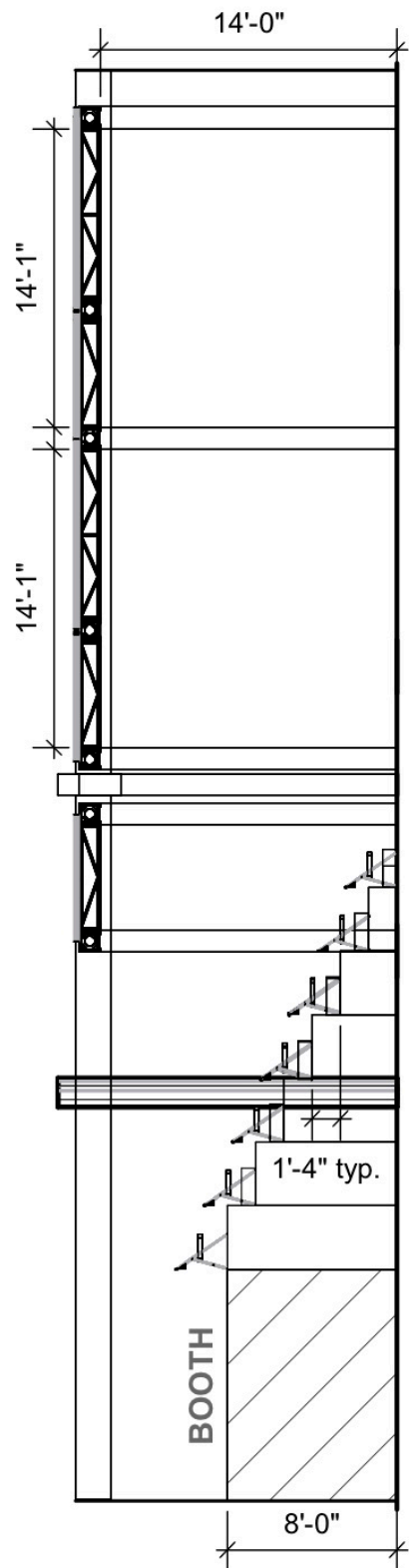
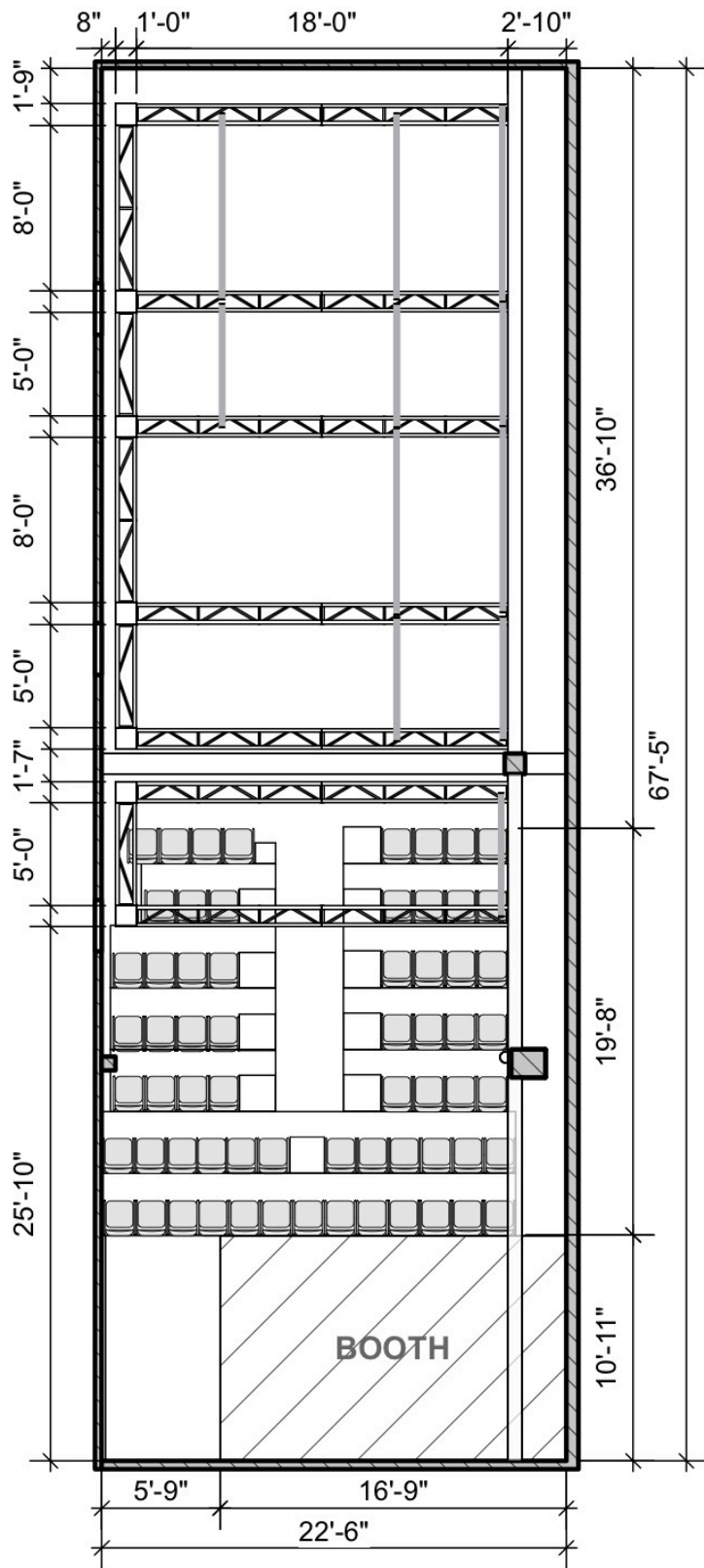
Committed to challenging the parameters of theater, research, and practice, the company's work is situated in the tension between acting and performance; theatrical design and installation; multimedia and interactive technology.

Its considerable body of work includes: production work with the world's leading theatrical innovators, pedagogical work with renowned universities, engagement with non-theatrical communities, and international training and research initiatives.

FOR MORE INFORMATION ABOUT MITU580, THEATER MITU, OR RENTING OUR SPACE, PLEASE CONTACT: rentals@theatermitu.org
OR VISIT: www.theatermitu.org
FACEBOOK: [facebook.com/mitu580](https://www.facebook.com/mitu580) & [facebook.com/theatermitu](https://www.facebook.com/theatermitu)
INSTAGRAM: @mitu580 & @theatermitu



MITU580



Theater Mitu - 580 Sackett St
Groundplan and Section, ver 0.5





MITU580

TECHNICAL SPECIFICATIONS

SEATING CAPACITY

64 people (maximum)

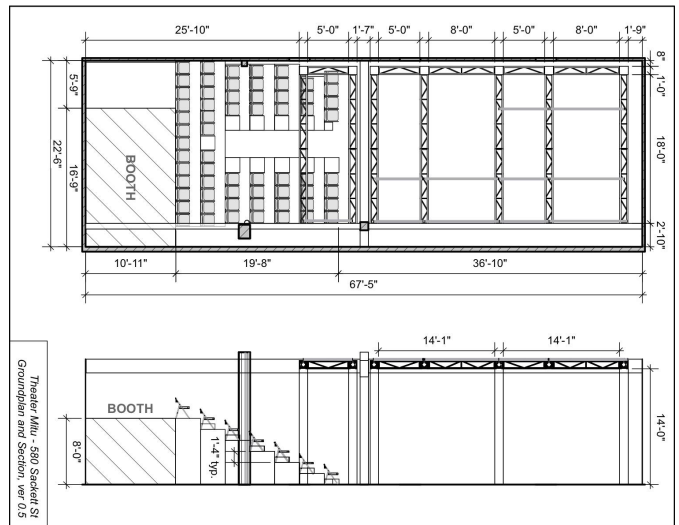


TABLE OF CONTENTS

MITU580

Page 1 - The Space and Front of House

Page 2 - Video and Electrics

Page 3 - Electrics (contd.)

Page 4 - Sound

LARGE SPACE

TOTAL DIMENSIONS

≈ 67'x24' of flexible open space
≈ 47'x24' of playing space with risers installed

DOUBLE DOOR ENTRANCE/EXIT TO LOBBY

4'8" wide x 6'8" high

TRUSS GRID

12" box truss; Floor to bottom of truss: 14'-15'
Ceiling height is approx. 16'

SPACE FUNCTONS

Air Conditioning and Heating available in the space
3 windows and 2 skylights that may be open/closed

FLOOR/WALLS

The floor is smooth and clean concrete
The walls are a mix of cement blocks and drywall
All the walls and the floor are charcoal in color

SOFT GOODS

MITU580 has a limited soft goods inventory.
(8) ≈ 4.5' x 15' black velour panels

FRONT OF HOUSE

LOBBY AND BOX OFFICE

Theater Mitu's offices are located atop an industrial loft in the front of house area and must remain accessible to Mitu staff. Mitu staff will also require continuous access to the booth, equipment room, and unisex restroom in the lobby.

MITU580

RISERS AND SEATING

(64) Black, padded, armless folding chairs

A system of flexible riser platforms is available.

Typically, these are installed as pictured above but can be rearranged or struck as needed

PROPERTIES

(12) Music Stands

DRESSING ROOM

The dressing room is located inside the main space underneath the booth structure.

(1) unisex dressing room
suitable for a maximum of 8 performers
mirrors, tables
chairs
costume hooks

No showers or laundry facilities.

Performers & crew use single restroom (same as the audience).

MITU580

LOAD-IN AREA

Main Entrance is a standard 80"x 32" steel door.
Entrance to large rear space is a set of double doors measuring 4'8" wide x 6'8" high

Plans and sections are available in Vectorworks and PDF.

MITU580's technical specifications, seating charts, photos, stage drawings and more are available upon request.

Please email MITU580's space manager at rentals@theatermitu.org with questions or to request materials.

VIDEO

MITU580

PROJECTORS

- (1) NEC NP-P502HL-2 5000-Lumen Full HD Laser DLP Projector

VIDEO CABLES

- (19) VGA (from 5'-50')
 (10) HDMI (from 6'-50')
 (11) DVI (from 5'-15')

*Additional video equipment available for rental upon request (additional short throw projectors and other items including cameras, video interfaces, tripods, projection mapping software, etc.)

ELECTRICS

MITU580

OVERVIEW

MITU580 offers a hung, circuited, and patched (not focused) Rep Plot that must be restored at the end of rental period.

All lighting and sound consoles are connected to a Gigabit Ethernet Hub allowing for control and synching over a network. Cat6 Cable connections are available in the booth and in the playing space/exhibition space.

DIMMER

MITU580 does not have a traditional theatrical dimmer setup as the full lighting rig is LED. 80 Amps of power (four 20amp circuits) are dedicated to lighting. Additional circuits available in the grid for work lights, sound, and video.

CONSOLE

Located in the lofted booth in the rear of the space.

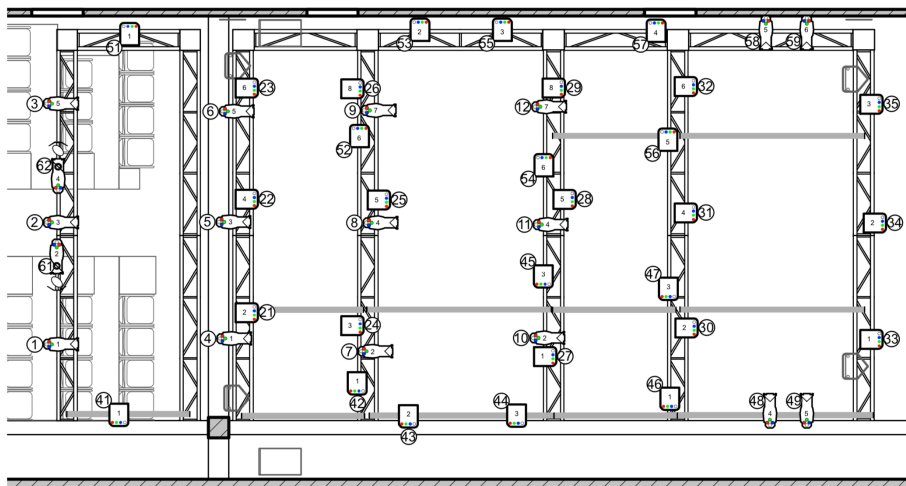
ETC Ion 2000 programmable console with a monitor, keyboard, and mouse.

10 amps of power is dedicated to lighting control at booth location.

The console cannot be moved without express permission.

HOUSE LIGHTS/WORK LIGHTS

Must use existing rep plot or additional instruments for House Lights and/or Work Lights. To allow for flexibility, there is no separate system dedicated to either of these.



Plans and sections are available in Vectorworks and PDF.

MITU580's technical specifications, seating charts, photos, stage drawings and more are available upon request.

Please email MITU580's space manager at rentals@theatermitu.org with questions or to request materials.

ELECTRICS CONTD.

MITU580

LIGHTING FIXTURES

- (20) ETC ColorSource 4 Deep blue
(5-pin DMX)
 - (6) ETC EDLT 70deg lens for Source 4
 - (18) ETC EDLT 50deg lens for Source 4
 - (3) ETC EDLT 26deg lens for Source 4
 - (2) ETC EDLT 26deg lens for Source 4
- (30) Martin Rush Par 2 RGBW Zoom
(5-pin DMX)
- (4) Chauvet Slim Par Pro (3-pin DMX)
- (4) Phillips Showline SL Nitro 510 Strobes
(5-pin DMX)
- (1) Colorkey KasBar COB Tri 5 75W
RGB LED Wash Bar (3-pin DMX)
- (7) Birdies (MR-16 Lamps)

INTELLIGENT FIXTURES

- (2) Rosco DMX IRIS w/
built-in power supply
- (2) Rosco ICUE MOVING MIRROR
w/ 1 Rosco PSU51

LIGHTING CABLES

Below is the in-house cable inventory. Much of this is in use when the rep plot is hung and circuited. Additional cable is usually available but MITU580 cannot guarantee anything beyond what is listed here.

PowerCon Cables

- (10) 5' Powercon cable
- (13) 10' Powercon cable
- (7) 15' Powercon cable
- (8) 25' Powercon cable
- (3) 50' Powercon cable

Edison extension cables

- (1) 10' Edison cable
- (3) 15' Edison cable
- (6) 25' Edison cable
- (3) 50' Edison cable

3 pin DMX cable

- (2) 10' DMX cable, 3-pin
- (10) 25' DMX cable, 3-pin

4 pin DMX/XLR cable

- (2) 5' DMX cable, 4-pin
- (2) 15' DMX cable, 4-pin

5 pin DMX cable*

- (7) 5' DMX cable, 5-pin
- (8) 10' DMX cable, 5-pin
- (11) 15' DMX cable, 5-pin
- (8) 25' DMX cable, 5-pin
- (1) 50' DMX cable, 5-pin

*NOTE: Cable inventory varies slightly depending on activity in the space. The 5pin DMX and Powercon cables listed above are the minimum that will be available during the rental period. MITU580 cannot guarantee additional or spare cable in the inventory but it is often available.

CONTROL

- (1) DMX Opto Splitter
(ENTEC RDS8, 1IN/8OUT, 5-pin)
- (4) Chauvet 4-Channel Edison Dimmers
(3-pin DMX)

PIPE & IRON ACCESSORIES

- (5) 18" Sidearm, w/ 1 Tee
- (5) 24" Sidearm, w/ 1 Tee

LADDERS

- (2) 12' A-Frame Ladder

Plans and sections are available in Vectorworks and PDF.

MITU580's technical specifications, seating charts, photos, stage drawings and more are available upon request.

Please email MITU580's space manager at rentals@theatermitu.org with questions or to request materials.

SOUND

MITU580

OVERVIEW

There are (2) mains, (4) fills and (2) subs available in the space. *(NOTE: The Rep sound plot includes 2 mains, 2 fills, and 2 subs)*

There is a digital snake (I/O rack) in the space connected to the console to allow for easier audio cable-runs.

All speakers can be moved but must be restored to the Rep Plot at the end of the rental.

There is also a Clear Com System available upon request.

MIXING EQUIPMENT

Digital Mixing Console located in the booth at the rear of the space. One 25" AUX cable remains connected to the console for basic playback.

The console cannot be moved without express permission

Yamaha TF-3 Console

Yamaha NY-64D Dante Card

Yamaha TIO-1608 I/O Rack for TF-3

SPEAKERS

- (2) QSC KW122 Mains Speakers
- (4) Yamaha DXR8 Speaker
- (2) QSC KS112 Subwoofer
- (2) Kustom PA50 personal PA system Speakers

SOUND CABLES*

XLR Cable

- (14) 10' XLR Cable
- (13) 25' XLR Cable
- (14) 50' XLR Cable
- (4) 75' XLR Cable
- (1) 100' XLR Cable

MICROPHONES

- (5) Shure SM58 microphones
- (5) Microphone stands with boom arms

PLAYBACK

Hookups for Computer Playback are available and up to 24 Channel playback via Dante.

**Please note MITU580 cannot provide any computers for playback*

*Additional sound cables, equipment, and software may be available upon request or rented from MITU580 for an additional fee. (this includes but is not limited to TRS cable, AUX cable, various audio interfaces, and peripheral devices)